



Castlemaine Art  
Gallery and Historical  
Museum

Exhibition Programme  
2012

14 Lyttleton Street  
Castlemaine Victoria 3450  
Tel 03 5472 2292  
Fax 03 5470 6184

[www.castlemainegallery.com](http://www.castlemainegallery.com)

Open 10-5 Mon-Fri  
12-5 Weekends &  
Public Holidays  
Closed Good Friday &  
Christmas Day

## Peggy Shaw: A Retrospective

14 January – 26 February

Comprising over 50 works covering all periods of Peggy Shaw's creative life, this exhibition includes early landscape sketches through to her more recent and very popular floral watercolours.



*Pale Pink Magnolias, Chinese Vase*  
2010  
Watercolour  
Private collection

## Ray Pearce: Bite

10 March – 29 April

Recent ceramics and prints by this Maiden Gully artist recently featured on the ABC Arts Program.

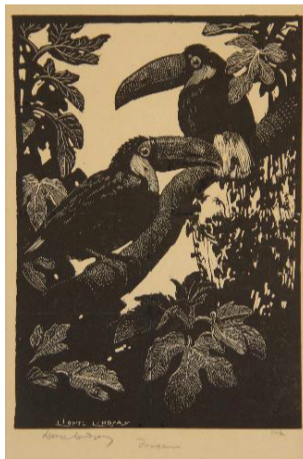


*Passengers 2012*  
Porcelain with  
celadon glaze

## Lionel Lindsay: Works from the Permanent Collection

Benefactors Gallery  
10 March – 29 April

Recognised as a painter, graphic artist, writer and critic, this exhibition features the complete holdings from the permanent collection with a focus on his superb woodcuts of birds and still life.

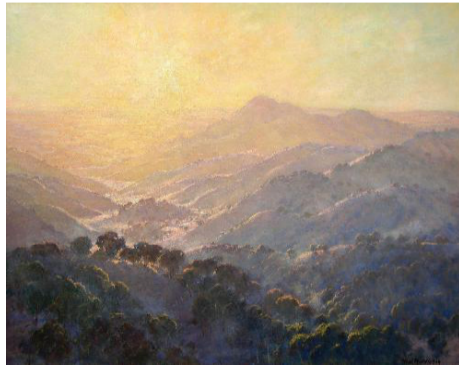


*Toucans 1923*  
Wood engraving  
Castlemaine Art Gallery and  
Historical Museum  
Gift of John Brackenreg 1953

## Max Middleton: Painter of Light

5 May – 24 June

A tribute exhibition covering landscape, still life, figure work and animals spanning over 60 years as a professional painter.



*Creation of a New Day 1977*  
Oil on canvas  
Collection of the  
artist

## Buda Contemporary Textiles 2012 Exhibition & Award

2 – 17 June

## Richard Crichton: Works from the Studio

1 – 29 July

Born in 1935, Richard Crichton has been known as a lecturer in Fine Art at RMIT but his own paintings deserve greater recognition by the art public. This exhibition highlights his original subjects and techniques. Supported by Eastgate & Holst, Dealers in Fine Art.



*Two Cows and Rainbow 1973*  
Oil on canvas  
Collection of the artist

## Jeff Makin: Drawings

4 August – 2 September

Jeffrey Makin is a full-time artist, art critic and Director of Port Jackson Press Australia, who now lives in Chewton. He recently published his essays and reviews on Art in Australia titled *Critical Moments*. The exhibition will focus on drawings of Central Victoria and elsewhere based on the landscape.



*The Old Oak!*  
Charcoal and oil stick  
Collection of the artist

## John Borrack: Selected Paintings and Drawings 1970–2011

9 September – 28 October

Best known for his lyrically structured paintings, John Borrack's sensitive interpretation of the Australian landscape balances the needs of technique and theory with clarity of emotional expression.



*Haasts Bluff NT 2004/05*  
Watercolour  
Collection of the artist

## Susan Weste – Elements of Nature: Meanderings with a Camera

3 November – 9 December

Photographs around the Central Victoria countryside, observing and recording elements of the landscape - wood, water, rock, grass, clouds and the ever changing light.



*Storm Clouds 2010*  
Photograph

## Ray Stanyer and Ellen Hansa – Wither shall I wander?

Higgins Gallery  
3 November – 9 December

Ceramic sculpture lends itself to beautiful storytelling. Wither shall I wander? A question we all should ask. Working with the same theme each artist demonstrates a different approach.



above  
Ellen Hansa  
*Quo Vadis (where are you going?)*

below  
Ray Stanyer  
*A never considered arrival*



A GEM OF THE GOLDFIELDS



MOUNT ALEXANDER  
SHIRE COUNCIL

ARTS  
VICTORIA

State Government  
Victoria